

ROTALUX SOFTBOX

Every Sofbox comes with:

- Reflective Fabric
- External Diffuser
- Internal Diffuser
- Elinchrom Speed Ring
- Rods
- Carrying Bag
- Translucent Deflector

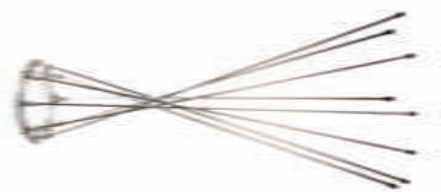


360° rotating system for all Rotalux softboxes



Deflector Set (gold, translucent, silver, frost) — N° 26310

Elinchrom is the only flash system with the central umbrella fitting, which is essential when Reflectors or Rotalux softboxes are used with Deflector Sets. These accessories can eliminate, soften or tone sharp shadow edges. The set contains four different deflectors; gold, silver, frost and translucent, each of 14 cm diameter.



Rotalux Adapter Rings

Elinchrom users aren't the only ones who can take advantage from the best softbox system. There are now optional adapter speedrings for other brands of studio flash. Only one adapter ring is required for any shape and size of Rotalux.



Code n°	Brand
26530	Bowens
26531	Profoto
26532	Broncolor / Pulso
26533	Hensel / Expert / EH
26534	Alien Bee / Balcar
26535	Comet
26536	Photona

ROTALUX DEEP INDIRECT

Based on the Rotalux system, this softbox offers the possibility to fit a flash unit indirectly. This design offers a superb crispy light, when used without diffuser and can be modified to a softer light by using the included diffusers. The included second Rotalux adapter ring can be used to fit the Elinchrom flash unit directly like a normal softbox, depending upon which lighting effect is preferred, direct or indirect.

Rotalux Deep Indirect 150 cm — N° 26188
Included external and internal diffuser, second Rotalux adapter ring, translucent deflector and carrying bag. Requires the EL-Tripod 31043 or heavier. Depth: 73cm, with handle 96cm. 360° rotating system.

Hooded Diffuser (optional) — N° 26771
Elinchrom offers a Hooded Diffuser to limit the spread of light for a more directed light control.



WHAT'S A NAME WORTH ...
ELINCHROM – SWISS FLASH MANUFACTURER 1962 – 2012



ROTALUX®

elinchrom
creative image lighting technology

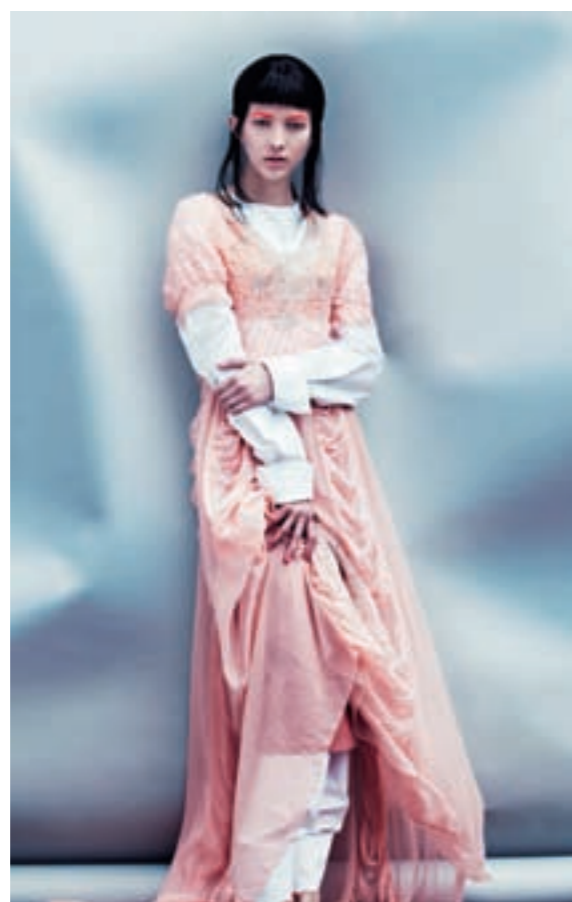
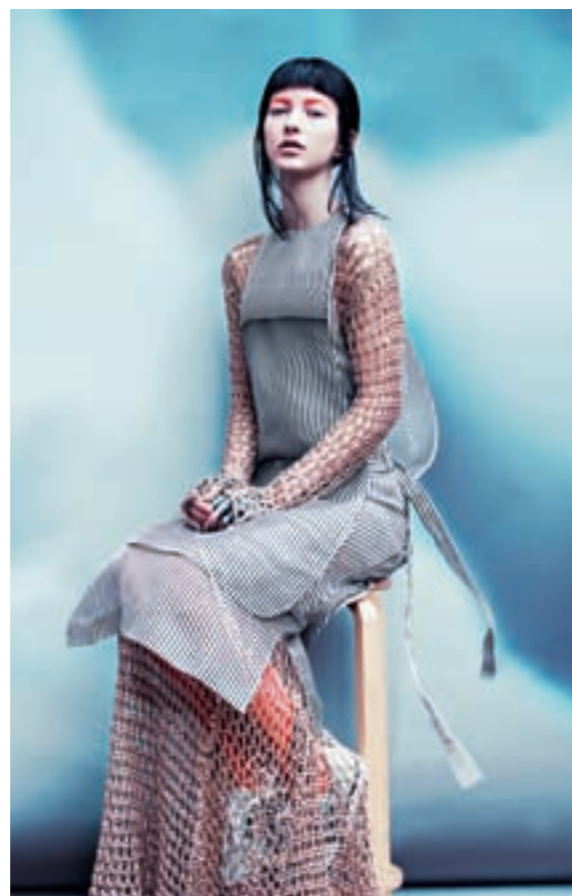
This brochure may show images of products with accessories, which are not part of Sets or single units. Elinchrom Set and single unit configurations may change without advise and they might be different in other countries.

Photo: Anoush Abrar & Aimée Hoving www.anoushaimee.com

The easy mounting Rotalux system is probably the most widely copied of all softbox systems. However, it is easier to copy a design than a quality and the Rotalux softboxes remain the best in their class.

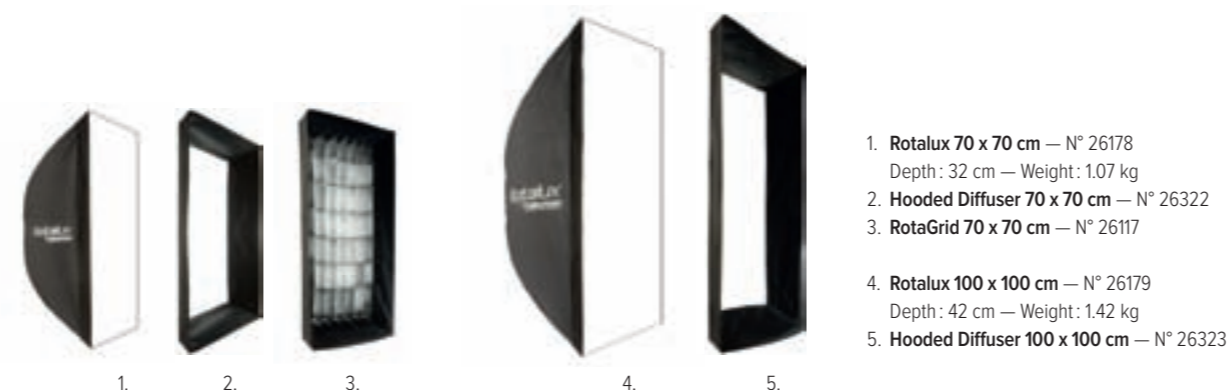
They are lightweight and unlike many other softboxes, fold down just like an umbrella and can be easily stored in the included carrying bag. The quality of light is outstanding because of their construction and the internal diffuser provides the softest and most even light possible.

The optional deflector set takes advantage of the unique Elinchrom central shaft to modify the softness / hardness and colour like no other softbox system. Rotalux adapter rings are now also available for other brands of flash.



FIVE SHAPES, VARIOUS SIZES

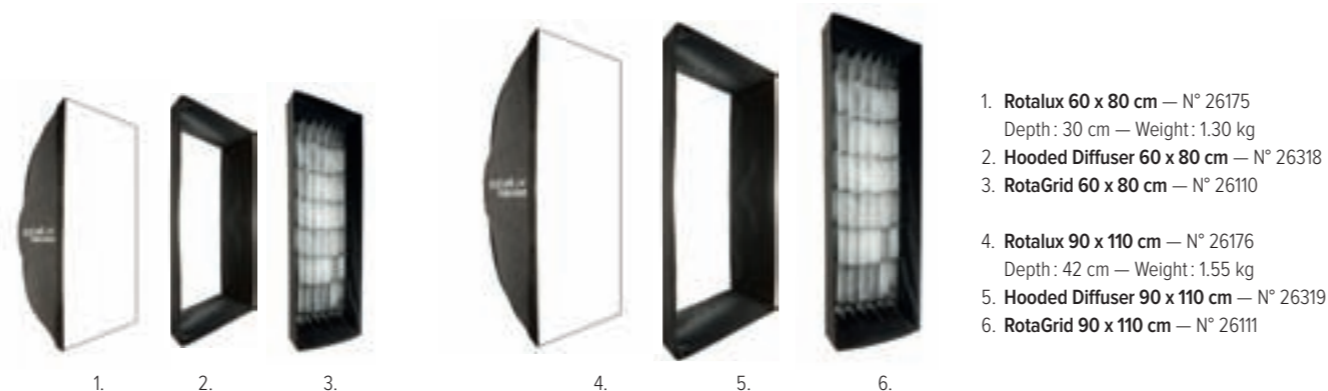
SQUARE Rotalux square softboxes are good for head and shoulder portraits, products or for use in smaller spaces. The catchlight can be similar to windows.



STRIP Rotalux strip softboxes are great for product photography, especially bottles and other round reflective items. They can also be used for ¾ length portraits and also widely used to light backgrounds where the length helps avoid fall-off from top to bottom.



RECTANGULAR Rotalux recta softboxes are useful for general purpose photography like portraits and product photography. Because of their shape and size, they provide flexibility in placement.



OCTOGONAL Rotalux octa softboxes are very popular among beauty and fashion photographers, as they prefer the round catchlight given by these softboxes. You can make yourself a great folding beauty dish just by removing the front and inner diffusers and adding one of the optional deflectors.



DEEP OCTOGONAL Rotalux deep octa softboxes have become the most popular shape among Rotalux users. The narrow shaped Deep Octa reduces the spread of light and offers sharper shadows compared to standard sized octagonal softboxes. They provide a very even diffuse light over the front screen and are an excellent crispy and direct light when used without diffusers to give a beauty dish look.



1. Rotalux ø 70 cm — N° 26187
Depth: 40 cm — Weight: 0.80 kg
2. Hooded Diffuser ø 70 cm — N° 26770
3. Rotalux ø 100 cm — N° 26185
Depth: 65 cm — Weight: 1.50 kg
4. Hooded Diffuser ø 100 cm — N° 26328

EL-Boom Arm 63 – 156 cm — N° 31049

The EL-Boom Arm with rubberised handgrip extends head / hair lights up to 156 cm. This is a comfortable way to hold up lighting gear over the subject. The profiled extension tube avoids heads, reflectors spinning around even when used with a softbox. The two sections of the EL-Boom Arm can be quickly adjusted with the clip-locks.

- Min. size: two sections, 63 cm
- Max. extension 156 cm
- Weight: 0.44 kg
- Rubberised handgrip
- Profiled aluminium tubes
- Standard spigot for EL-Flash heads and the Ranger Quadra heads.

